

Surface Downlight

DWR140-MD-SF-C-40W



DWR140-MD-SF-C-40W.png

| | |
|-----------------------------|--|
| Source | LED Bridgelux |
| Connection | Wire |
| Gr. Power | 40W ±5% |
| Input Voltage | AC85-277V |
| Driver | Kegu; Lifud |
| Control (standard) | Not dim. |
| Dimming option | Triac dim.; 0-10V dim.; DALI |
| Beam Angle (°) | 15/30/45 |
| CCT (Kelvins) | 2700°K; 3000°K; 4000°K; 5000°K; 6500°K; 5700°K |
| Lumens | 3900-4100 |
| Luminaire efficiency | 103Lm/W |
| CRI (standard) | >80Ra |
| for option | >90Ra; >97Ra |
| Fixture Color | White; Black |
| Cover | Lens |
| Dimensions | dia 73*108mm |
| Protection Rating | IP65 |
| Electrical Class | Class II |
| Lifetime | >50.000h |
| Warranty | 3 Years |

Standard Packing Details

| | |
|-------------------------|---------|
| Unit Volum (CBM) | 0,00457 |
| Unit GW (kg) | 0 |
| Qty per carton | 18 |

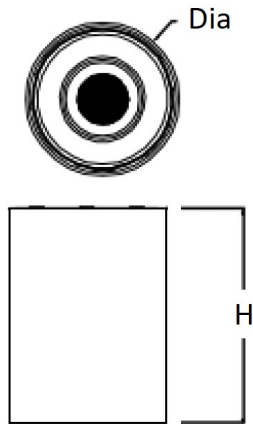
Other

reflector color for choice: White, Black, Silver, Gold, Rose gold; 5 years warr. For option

Surface Downlight

DWR140-MD-SF-C-40W

Sizes drawing

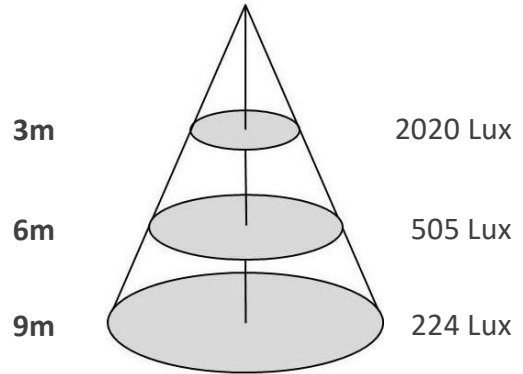


DWR140-MD-SF-C-40W.drw

in mm

Illumination Diagram

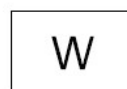
4100Lm with 30° beam



DWR140-MD-SF-C-40W.lux



Reflector



W White



B Black



CH Chrome



BN Brushed Nickel



BB Brushed Brass